

# Corrosion Repair

## Damage



## 1. Wax & Grease Remover



- Clean surface
- Polish old paint finish
- Mask adjacent areas
- Remove rust, sand down to bare metal, clean

## 2. Primer Filler



- Apply one thin coat of 2K Epoxy Primer in one coats
- IR dry through
- Sand down spot area and surrounding old paint finish
- Clean surface

## 3. Filler



- Apply 2K Urethane Acrylic Filler
- Allow five minutes flash-off time (until achieving a mat finish)

## 4. Guide Coat Black



- Apply the Guide Coat Black as a support for the subsequent sanding process

## 5. Wax & Grease Remover



- Polish the edge of the old paint finish
- Clean and dry surface

## 6. Base Coat



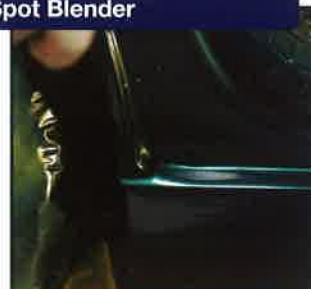
- Spray test sample
- Spray from the outer area into the middle of the spot
- Spray back to the edge zone
- Blend in Base Coat into the old paint finish

## 7. Clear Coat



- Apply one to two coats from the outer zone into direction of the spot and vice versa

## 8. Spot Blender



- After flash off time of the Clear Coat - blend in Spot Blender into the edge zone
- IR dry through